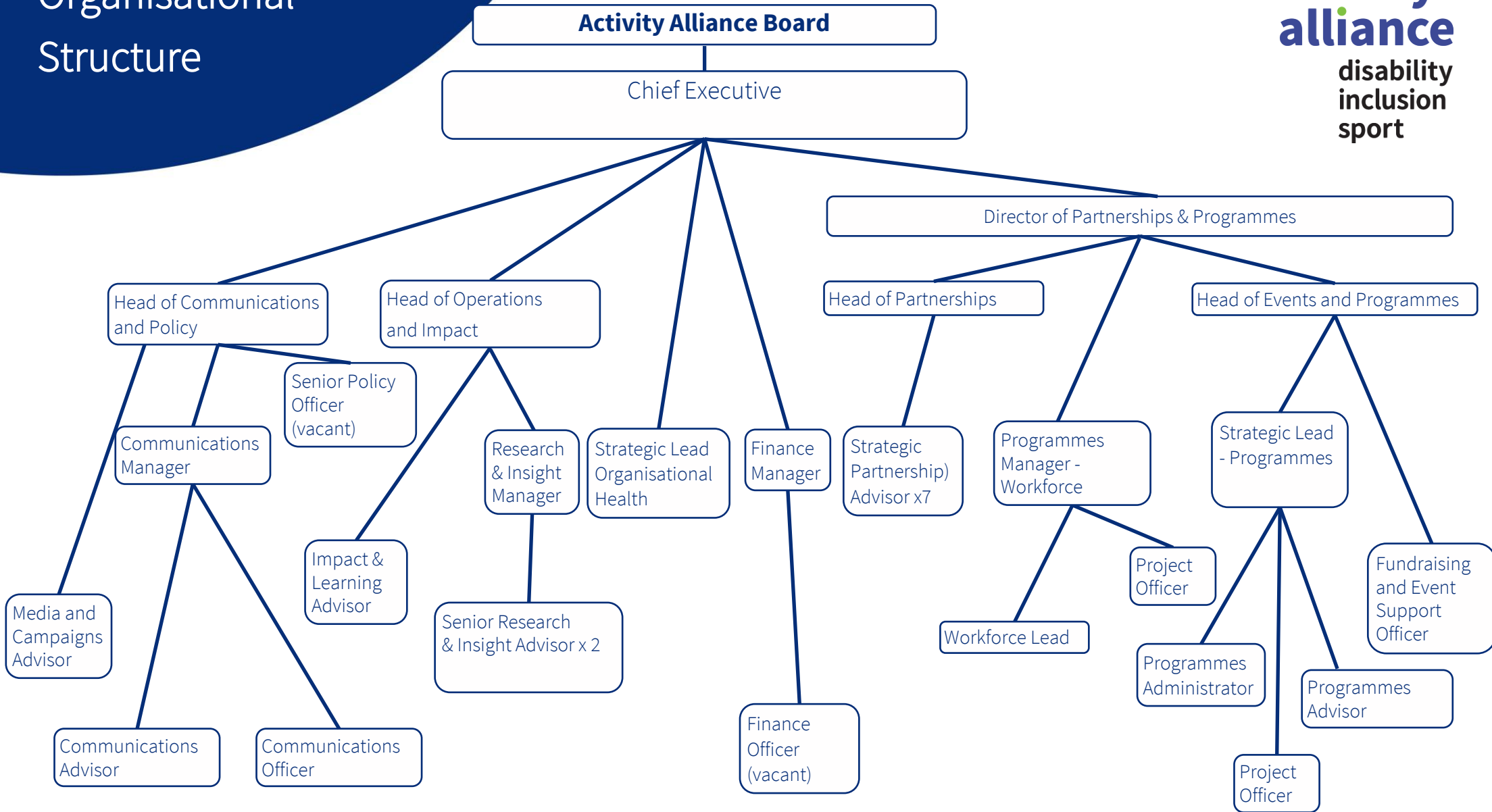


Organisational Structure



To find contact details for staff members visit the [team page on our website](#).

People of Activity Alliance

Activity Alliance Chair - Samantha Orde OBE

Chief Executive and Company Secretary- Adam Blaze

Honorary President - Baroness Tanni-Grey Thompson DBE

Honorary Vice President - John Amaechi OBE

Trustees

Dr Phil A Friend OBE

Rob J Belbin

Genny Cotroneo

Piers Martin

Issy Michelson

Lucy Smith

Andrea Dando

Loretta Sollars

Rebecca Evans

Gabriel Odiana

Staff Team:

The Leadership Team

Ray Ashley- Director of Partnerships

Catherine Slater – Head of Partnerships

Kat Southwell - Head of Operations and Impact

Sarah Brown-Fraser – Head of Comms and Policy

Jannine Walker – Head of Events and Programmes

Extended Leadership Team

Atul Thaker – Finance Manager

Agata Sromecka – Strategic Lead Organisational Health

Chloe Studley - Programmes Manager (Workforce)

Helen Derby – Strategic Lead Programmes

Annabel Carter – Research and Insight Manager

Partnerships Team

Dawn Hughes - Strategic Partnerships Advisor

Lorraine Harris - Strategic Partnerships Advisor

Nicola File - Strategic Partnerships Advisors

Andrew Whitaker - Strategic Partnerships Advisor

Ali Evans - Strategic Partnerships Advisor

Paul Downes - Strategic Partnerships Advisor

**activity
alliance**

**disability
inclusion
sport**

Workforce and Programmes Team

Helen Newberry - Programme Lead (Workforce)

Bronnie Griffiths – Project Officer

Emma Chadwick – Project Officer

Alex Giles – Project Admin

Operations and Impact Team

Jayant Mistry - Impact and Learning Advisor

Jessica Flavell - Senior Research and Insight Advisor

Molly O'Brien - Senior Research and Insight Advisor

Communications and Policy Team

Courtney Perks – Communications Manager

Wilf Reeve – Media and Campaigns Officer

Stacey Johnson - Communications Advisor

Sarah Sherborne – Communications Advisor

Events and Fundraising Team

Alex Prior Crespo – Fundraising and Event Support Officer